

# VSV/VSVI EKO

VSV 311-630 EKO

VSVI 311-630 EKO

**NEW!**

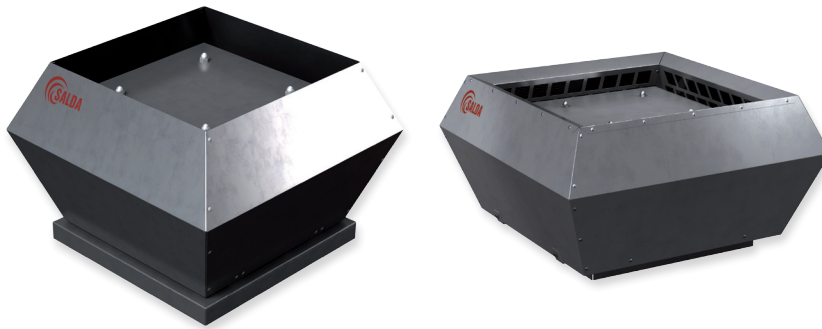


Roof fans

Tourelles

Dachventilatoren

Ventiladores de Tejado



Roof fans with vertical discharge are used to extract air from different premises. Motorised impeller is protected with a meshwork grille which protects from external objects that could cause mechanical damage to the impeller. Not suitable for polluted air, aggressive and explosive gases.

Plastic impeller with backward curved blades.

Efficient and low-noise EC fans.

VSVI EKO sound insulation: mineral wool, 50 mm thickness.

Motor: external rotor, motor protection with built-in thermal contact, maintenance free ball bearings.

Housing: made of galvanized steel. Optionaly can be made of aluminium.



Dachventilatoren werden für Abluft aus dem Raum verwendet. Laufrad ist mit Schutzgitter abgedeckt, der es vor Gegenständen schützt, die aus der Umgebung gelangen und das Laufrad mechanisch beschädigen können. Nicht geeignet für die Beförderung von verschmutzter Luft, aggressiven, explosiven Gasen.

Laufrad ist rückwärts gekrümmt, aus Kunststoff.

Sehr leise und sparsame EC - Ventilatoren.

VSVI EKO Schalldämmung: Steinwolle, 50mm stark.

Der Motor: Außenrotor, Direktantrieb, Motorschutz durch integriertem Thermokontakt, dauerhafte, keine Pflege erfordernde Lager.

Das Gehäuse aus verzinktem Blech. Auf Anfrage sind ebenso Ausführungen aus Aluminium verfügbar.



Tourelles utilisées pour l'extraction de l'air vicié du local. Turbine recouverte par des grilles la protégeant des objets étrangers pouvant provenir des alentours et endommager la turbine de manière mécanique. Le produit n'est pas adapté au transport d'air fortement pollué, de gaz agressifs ou explosifs.

Turbine : pales incurvées vers l'arrière, plastique.

Ventilateurs EC efficaces et silencieux.

Isolation acoustique en laine de roche : parois de 50 mm.

Moteur : rotor extérieur, entraînement direct, protection moteur intégrée par thermocontact, roulements à longue durée de vie et ne nécessitant pas d'entretien.

Enveloppe : tôle d'acier galvanisée. Si besoin, en aluminium.



Ventiladores de tejado utilizados para la extracción de aire. La turbina esta cubierta por unas rejillas que protegen el ventilador de cualquier agente externo que pueda dañar la unidad. No es adecuado para su uso con aire contaminado, gases agresivos o explosivos.

Turbina de PVC con álabes curvados hacia atrás.

Ventiladores EC silenciosos y eficientes.

Aislante acústico de lana de roca: 50 mm en paredes laterales.

Motor: rotor externo, protección del motor por termo-contacto, sin mantenimiento de los rodamientos de bolas.

Carcasa: chapa de acero galvanizado. Si se requiere puede ser de aluminio.

## Accessories

0-10V speed controller



Roof curb



Roof curb



Flange-adaptor



Flexible connection



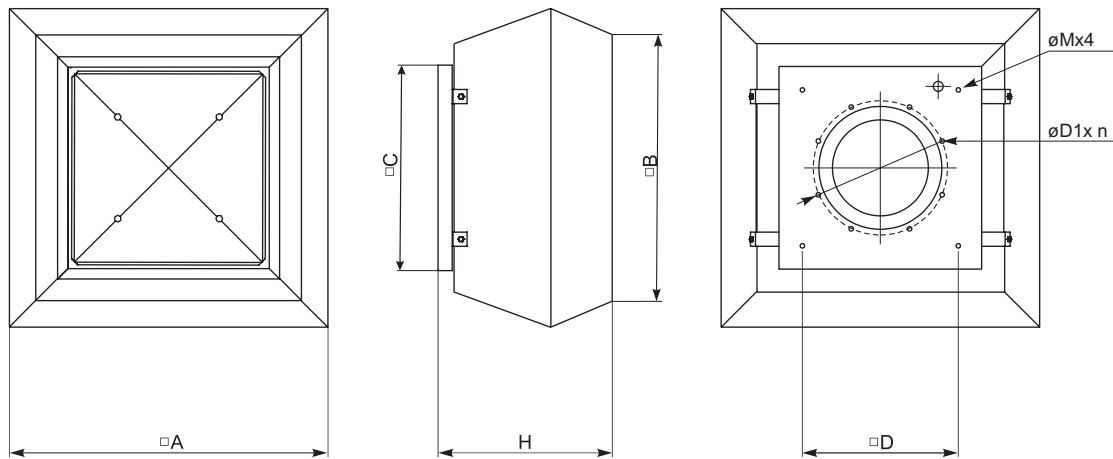
Back draft shutter



Main switch



# VSV/VSVI EKO



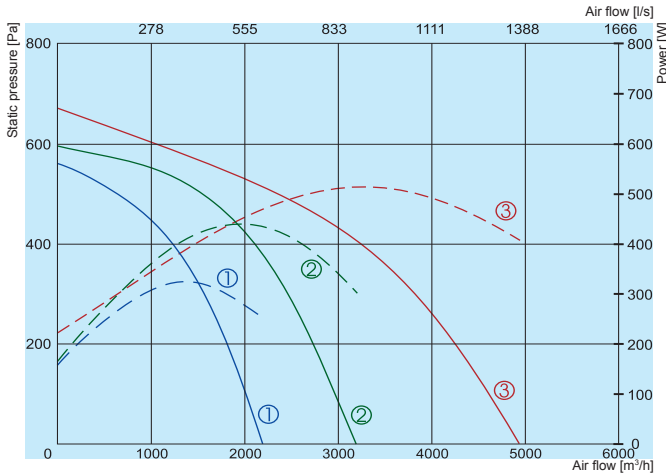
| Type         | Dimensions [mm] |         |         |         |         |         |     |   |
|--------------|-----------------|---------|---------|---------|---------|---------|-----|---|
|              | □A [mm]         | □B [mm] | □C [mm] | □H [mm] | ∅M [mm] | □D [mm] | ∅D1 | n |
| VSV 311 EKO  | 555             | 470     | 435     | 323     | M6      | 330     | -   | - |
| VSV 355 EKO  | 720             | 618     | 595     | 420     | M10     | 450     | -   | - |
| VSV 400 EKO  | 720             | 618     | 595     | 420     | M10     | 450     | -   | - |
| VSV 450 EKO  | 900             | 700     | 665     | 485     | M10     | 535     | -   | - |
| VSV 500 EKO  | 900             | 700     | 665     | 485     | M10     | 535     | -   | - |
| VSV 560 EKO  | 1150            | 972     | 939     | 609     | M10     | 750     | -   | - |
| VSV 630 EKO  | 1150            | 972     | 939     | 609     | M10     | 750     | -   | - |
| VSVI 311 EKO | 675             | 567     | 435     | 370     | M6      | 330     | 285 | 6 |
| VSVI 355 EKO | 844             | 716     | 595     | 420     | M10     | 450     | 438 | 6 |
| VSVI 400 EKO | 844             | 716     | 595     | 420     | M10     | 450     | 438 | 6 |
| VSVI 450 EKO | 966             | 817     | 665     | 488     | M10     | 535     | 438 | 6 |
| VSVI 500 EKO | 966             | 817     | 665     | 488     | M10     | 535     | 438 | 6 |
| VSVI 560 EKO | 1265            | 1033    | 939     | 611     | M10     | 750     | 605 | 8 |
| VSVI 630 EKO | 1265            | 1033    | 939     | 611     | M10     | 750     | 605 | 8 |

| Type             | Accessories |         |         |         |         |         |
|------------------|-------------|---------|---------|---------|---------|---------|
|                  | MTP010      | KS      | KSP     | FSV     | LSV     | ATS     |
| VSV/VSVI 311 EKO | +           | 311     | 311     | 311     | 311     | 311     |
| VSV/VSVI 355 EKO | +           | 355/400 | 355/400 | 355/400 | 355/400 | 355/400 |
| VSV/VSVI 400 EKO | +           | 355/400 | 355/400 | 355/400 | 355/400 | 355/400 |
| VSV/VSVI 450 EKO | +           | 450/500 | 450/500 | 450/500 | 450/500 | 450/500 |
| VSV/VSVI 500 EKO | +           | 450/500 | 450/500 | 450/500 | 450/500 | 450/500 |
| VSV/VSVI 560 EKO | +           | 560/630 | 560/630 | 560/630 | 560/630 | 560/630 |
| VSV/VSVI 630 EKO | +           | 560/630 | 560/630 | 560/630 | 560/630 | 560/630 |

# VSV/VSVI EKO

SALDA

ROOF FANS



**NEW!**

- ① — VSV/VSVI 311 L1 EKO
  - ② — VSV/VSVI 355 L1 EKO
  - ③ — VSV/VSVI 400 L1 EKO
- Performance  
- - - Power consumption

|                           |                      | 311 L1 EKO | 355 L1 EKO | 400 L1 EKO |
|---------------------------|----------------------|------------|------------|------------|
| Voltage/Frequency         | [V/Hz]               | 230/50     | 230/50     | 230/50     |
| Power consumption         | [kW]                 | 0,323      | 0,445      | 0,772      |
| Current                   | [A]                  | 1,51       | 2,03       | 3,5        |
| Speed                     | [min <sup>-1</sup> ] | 2270       | 2010       | 1700       |
| Max. airflow              | [m <sup>3</sup> /h]  | 2185       | 3195       | 4940       |
| Min./Max. air temperature | [°C]                 | -25/60     | -25/60     | -25/60     |
| Weight                    | [kg]                 | 20/24      | 30/38      | 33/38      |
| Wiring diagram            |                      | No.1       | No.1       | No.2       |
| Protection class:         | motor                | IP-54      | IP-54      | IP-54      |
|                           | terminal box         | IP-55      | IP-55      | IP-54      |
| Comply with ERP 2013      |                      | +          | +          | +          |

**VSV 311 L1 EKO**

| Lwa total, dB(A) | Lwa, dB(A) |        |        |       |       |       |       |    |
|------------------|------------|--------|--------|-------|-------|-------|-------|----|
|                  | 125 Hz     | 250 Hz | 500 Hz | 1 kHz | 2 kHz | 4 kHz | 8 kHz |    |
| Inlet            | 75         | 51     | 63     | 72    | 68    | 67    | 64    | 61 |
| Outlet           | 76         | 56     | 62     | 71    | 72    | 66    | 65    | 59 |
| Surrounding      | 78         | 56     | 67     | 73    | 72    | 71    | 68    | 63 |

Measured at 1901 m<sup>3</sup>/h, 150 Pa

**VSV 355 L1 EKO**

| Lwa total, dB(A) | Lwa, dB(A) |        |        |       |       |       |       |    |
|------------------|------------|--------|--------|-------|-------|-------|-------|----|
|                  | 125 Hz     | 250 Hz | 500 Hz | 1 kHz | 2 kHz | 4 kHz | 8 kHz |    |
| Inlet            | 75         | 51     | 63     | 70    | 67    | 70    | 65    | 60 |
| Outlet           | 76         | 54     | 67     | 68    | 70    | 70    | 66    | 58 |
| Surrounding      | 78         | 58     | 68     | 71    | 73    | 72    | 68    | 63 |

Measured at 2816 m<sup>3</sup>/h, 172 Pa

**VSV 400 L1 EKO**

| Lwa total, dB(A) | Lwa, dB(A) |        |        |       |       |       |       |    |
|------------------|------------|--------|--------|-------|-------|-------|-------|----|
|                  | 125 Hz     | 250 Hz | 500 Hz | 1 kHz | 2 kHz | 4 kHz | 8 kHz |    |
| Inlet            | 79         | 62     | 74     | 75    | 71    | 66    | 66    | 60 |
| Outlet           | 78         | 66     | 71     | 72    | 71    | 70    | 66    | 61 |
| Surrounding      | 82         | 68     | 77     | 77    | 73    | 71    | 69    | 64 |

Measured at 4370 m<sup>3</sup>/h, 183 Pa

**VSVI 311 L1 EKO**

| Lwa total, dB(A) | Lwa, dB(A) |        |        |       |       |       |       |    |
|------------------|------------|--------|--------|-------|-------|-------|-------|----|
|                  | 125 Hz     | 250 Hz | 500 Hz | 1 kHz | 2 kHz | 4 kHz | 8 kHz |    |
| Inlet            | 74         | 52     | 61     | 70    | 68    | 66    | 62    | 61 |
| Outlet           | 74         | 56     | 63     | 69    | 70    | 67    | 63    | 59 |
| Surrounding      | 77         | 57     | 65     | 73    | 72    | 70    | 66    | 63 |

Measured at 1901 m<sup>3</sup>/h, 150 Pa

**VSVI 355 L1 EKO**

| Lwa total, dB(A) | Lwa, dB(A) |        |        |       |       |       |       |    |
|------------------|------------|--------|--------|-------|-------|-------|-------|----|
|                  | 125 Hz     | 250 Hz | 500 Hz | 1 kHz | 2 kHz | 4 kHz | 8 kHz |    |
| Inlet            | 74         | 49     | 62     | 69    | 67    | 68    | 65    | 59 |
| Outlet           | 74         | 55     | 65     | 66    | 70    | 68    | 64    | 58 |
| Surrounding      | 77         | 56     | 67     | 71    | 71    | 71    | 68    | 62 |

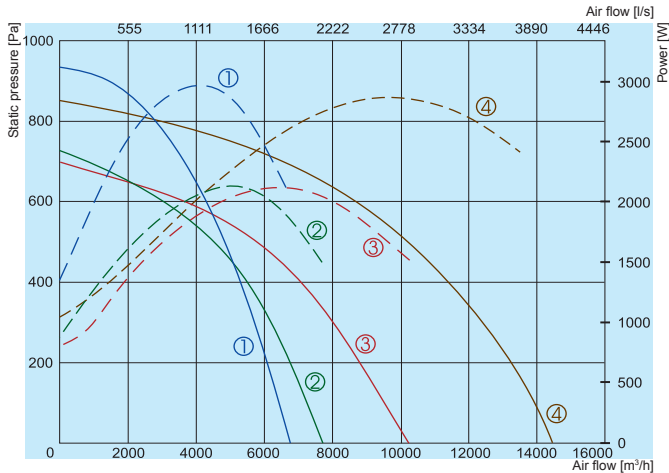
Measured at 2816 m<sup>3</sup>/h, 172 Pa

**VSVI 400 L1 EKO**

| Lwa total, dB(A) | Lwa, dB(A) |        |        |       |       |       |       |    |
|------------------|------------|--------|--------|-------|-------|-------|-------|----|
|                  | 125 Hz     | 250 Hz | 500 Hz | 1 kHz | 2 kHz | 4 kHz | 8 kHz |    |
| Inlet            | 78         | 62     | 75     | 73    | 68    | 66    | 65    | 59 |
| Outlet           | 77         | 64     | 70     | 71    | 71    | 68    | 66    | 60 |
| Surrounding      | 81         | 66     | 76     | 75    | 73    | 70    | 69    | 63 |

Measured at 4370 m<sup>3</sup>/h, 183 Pa

The fan characteristic curves were determined in accordance with EN ISO 5801. The sound levels were determined in accordance with DIN 45635 resp. ISO 3744 at a distance of 1 m from the fan.



**NEW!**

- ① VSV/VSVI 450 L3 EKO
  - ② VSV/VSVI 500 L3 EKO
  - ③ VSV/VSVI 560 L3 EKO
  - ④ VSV/VSVI 630 L3 EKO
- Performance  
- - - - Power consumption

|                           |                      | 450 L3 EKO | 500 L3 EKO | 560 L3 EKO | 630 L3 EKO |
|---------------------------|----------------------|------------|------------|------------|------------|
| Voltage/Frequency         | [V/Hz]               | 400/50     | 400/50     | 400/50     | 400/50     |
| Power consumption         | [kW]                 | 1,418      | 1,28       | 1,595      | 2,87       |
| Current                   | [A]                  | 2,22       | 2,02       | 2,51       | 4,42       |
| Speed                     | [min <sup>-1</sup> ] | 1800       | 1400       | 1230       | 1230       |
| Max. airflow              | [m <sup>3</sup> /h]  | 6760       | 7670       | 10220      | 14500      |
| Min./Max. air temperature | [°C]                 | -25/60     | -25/60     | -25/40     | -25/60     |
| Weight                    | [kg]                 | 50/60      | 50/60      | 82/100     | 103/121    |
| Wiring diagram            |                      | No.2       | No.2       | No.2       | No.2       |
| Protection class:         | motor                | IP-54      | IP-54      | IP-54      | IP-54      |
|                           | terminal box         | IP-54      | IP-54      | IP-54      | IP-54      |
| Comply with ERP 2013      |                      | +          | +          | +          | +          |

**VSV 450 L3 EKO**

| LWA total, dB(A) | Lwa, dB(A) |        |        |       |       |       |       |    |
|------------------|------------|--------|--------|-------|-------|-------|-------|----|
|                  | 125 Hz     | 250 Hz | 500 Hz | 1 kHz | 2 kHz | 4 kHz | 8 kHz |    |
| Inlet            | 83         | 66     | 77     | 80    | 74    | 73    | 71    | 69 |
| Outlet           | 85         | 71     | 77     | 80    | 78    | 76    | 73    | 69 |
| Surrounding      | 87         | 71     | 78     | 83    | 80    | 76    | 75    | 72 |

Measured at 6345 m<sup>3</sup>/h, 121 Pa

**VSV 500 L3 EKO**

| LWA total, dB(A) | Lwa, dB(A) |        |        |       |       |       |       |    |
|------------------|------------|--------|--------|-------|-------|-------|-------|----|
|                  | 125 Hz     | 250 Hz | 500 Hz | 1 kHz | 2 kHz | 4 kHz | 8 kHz |    |
| Inlet            | 79         | 66     | 74     | 75    | 68    | 67    | 67    | 66 |
| Outlet           | 80         | 69     | 74     | 75    | 73    | 70    | 68    | 64 |
| Surrounding      | 83         | 70     | 75     | 79    | 76    | 72    | 71    | 68 |

Measured at 7139 m<sup>3</sup>/h, 120 Pa

**VSV 560 L3 EKO**

| LWA total, dB(A) | Lwa, dB(A) |        |        |       |       |       |       |    |
|------------------|------------|--------|--------|-------|-------|-------|-------|----|
|                  | 125 Hz     | 250 Hz | 500 Hz | 1 kHz | 2 kHz | 4 kHz | 8 kHz |    |
| Inlet            | 78         | 69     | 73     | 72    | 70    | 68    | 66    | 62 |
| Outlet           | 78         | 69     | 71     | 73    | 70    | 69    | 66    | 59 |
| Surrounding      | 81         | 72     | 73     | 75    | 73    | 71    | 70    | 65 |

Measured at 9113 m<sup>3</sup>/h, 160 Pa

**VSV 630 L3 EKO**

| LWA total, dB(A) | Lwa, dB(A) |        |        |       |       |       |       |    |
|------------------|------------|--------|--------|-------|-------|-------|-------|----|
|                  | 125 Hz     | 250 Hz | 500 Hz | 1 kHz | 2 kHz | 4 kHz | 8 kHz |    |
| Inlet            | 82         | 65     | 75     | 79    | 75    | 72    | 71    | 65 |
| Outlet           | 83         | 70     | 74     | 80    | 76    | 72    | 72    | 68 |
| Surrounding      | 85         | 72     | 77     | 82    | 76    | 75    | 75    | 69 |

Measured at 13018 m<sup>3</sup>/h, 230 Pa

**VSVI 450 L3 EKO**

| LWA total, dB(A) | Lwa, dB(A) |        |        |       |       |       |       |    |
|------------------|------------|--------|--------|-------|-------|-------|-------|----|
|                  | 125 Hz     | 250 Hz | 500 Hz | 1 kHz | 2 kHz | 4 kHz | 8 kHz |    |
| Inlet            | 82         | 67     | 75     | 79    | 72    | 72    | 71    | 68 |
| Outlet           | 84         | 69     | 76     | 79    | 78    | 74    | 73    | 68 |
| Surrounding      | 86         | 71     | 79     | 82    | 79    | 76    | 75    | 71 |

Measured at 6345 m<sup>3</sup>/h, 121 Pa

**VSVI 500 L3 EKO**

| LWA total, dB(A) | Lwa, dB(A) |        |        |       |       |       |       |    |
|------------------|------------|--------|--------|-------|-------|-------|-------|----|
|                  | 125 Hz     | 250 Hz | 500 Hz | 1 kHz | 2 kHz | 4 kHz | 8 kHz |    |
| Inlet            | 78         | 67     | 72     | 74    | 67    | 67    | 67    | 65 |
| Outlet           | 79         | 67     | 73     | 74    | 73    | 68    | 68    | 62 |
| Surrounding      | 82         | 70     | 76     | 77    | 74    | 71    | 71    | 67 |

Measured at 7139 m<sup>3</sup>/h, 120 Pa

**VSVI 560 L3 EKO**

| LWA total, dB(A) | Lwa, dB(A) |        |        |       |       |       |       |    |
|------------------|------------|--------|--------|-------|-------|-------|-------|----|
|                  | 125 Hz     | 250 Hz | 500 Hz | 1 kHz | 2 kHz | 4 kHz | 8 kHz |    |
| Inlet            | 77         | 69     | 71     | 70    | 68    | 68    | 66    | 61 |
| Outlet           | 77         | 67     | 70     | 72    | 70    | 68    | 66    | 58 |
| Surrounding      | 80         | 71     | 74     | 74    | 72    | 71    | 69    | 63 |

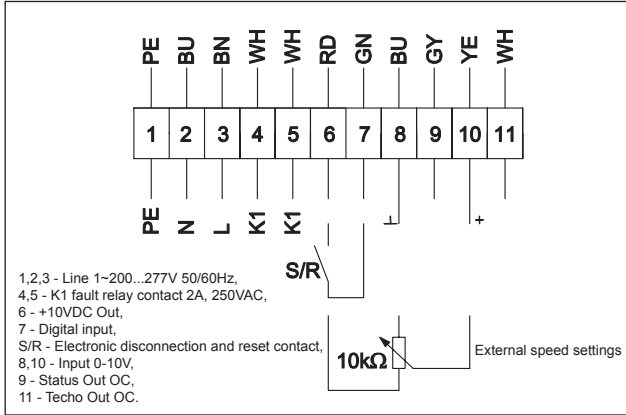
Measured at 9113 m<sup>3</sup>/h, 160 Pa

**VSVI 630 L3 EKO**

| LWA total, dB(A) | Lwa, dB(A) |        |        |       |       |       |       |    |
|------------------|------------|--------|--------|-------|-------|-------|-------|----|
|                  | 125 Hz     | 250 Hz | 500 Hz | 1 kHz | 2 kHz | 4 kHz | 8 kHz |    |
| Inlet            | 81         | 65     | 73     | 78    | 73    | 70    | 71    | 63 |
| Outlet           | 82         | 69     | 74     | 78    | 74    | 71    | 72    | 67 |
| Surrounding      | 84         | 70     | 76     | 81    | 76    | 74    | 75    | 68 |

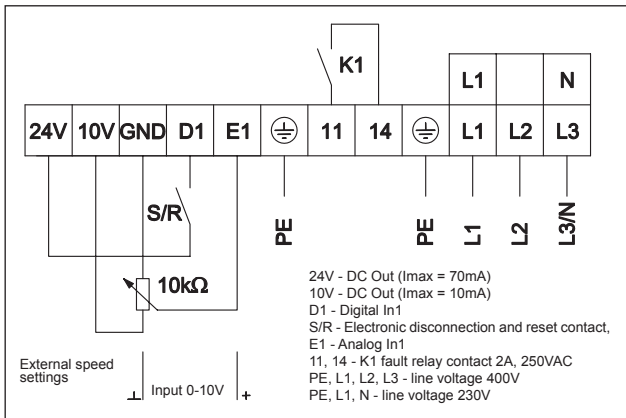
Measured at 13018 m<sup>3</sup>/h, 230 Pa

The fan characteristic curves were determined in accordance with EN ISO 5801. The sound levels were determined in accordance with DIN 45635 resp. ISO 3744 at a distance of 1 m from the fan.



**Wiring diagram No. 1**

- PE - yellow - green
- BU - blue
- BN - brown
- RD - red
- GN - green
- YE - yellow
- WH - white
- GY - gray



**Wiring diagram No. 2**